

# Crew Pairing Considerations

Ensuring Safe Flight Operations

**Brian Small**

Director, Regulatory Affairs, FlightSafety Int'l

**Candace Covington**

Senior Director, Aviation, Adobe

**Russ Arena**

Contract Pilot

**Nicole Battjes**

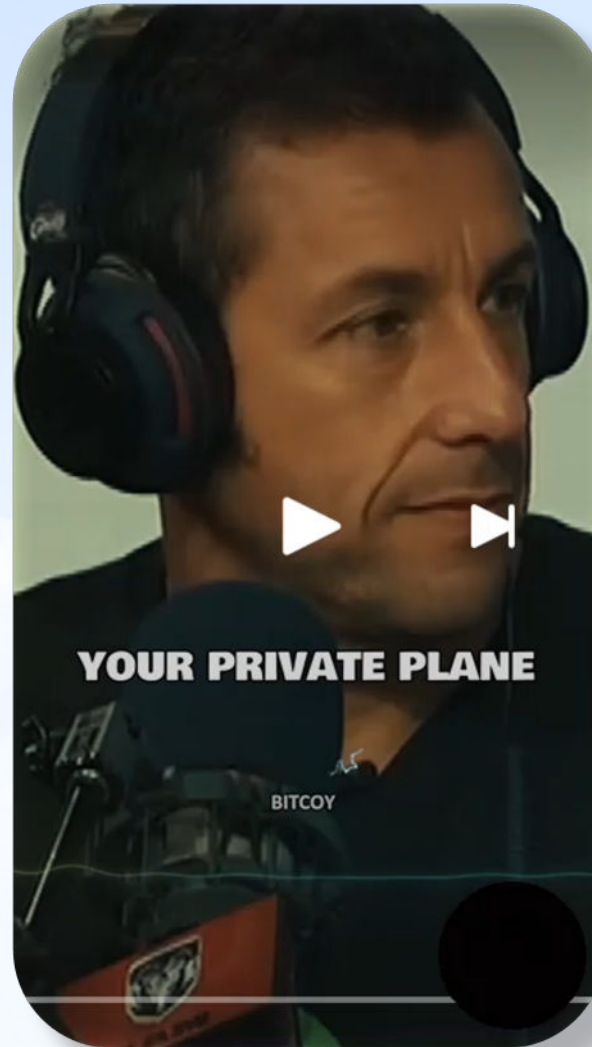
CEO, Rainbow Helicopters





***A just culture is  
critical to a strong  
safety culture***

***“Why did I trust them flying this thing?”***



***“Why didn’t I do an interview with either one of these guys?”***

# SAFETY CULTURE

JUST

REPORTING

FLEXIBLE

LEARNING

INFORMED



- James Reason





# ONBOARDING

Employee and Employer  
Considerations

# TOOLS FOR SAFETY





**THE POSTFLIGHT CONVERSATION**





## **IIMC Encounter Training and Crew Pairing align to save lives**



**QUESTIONS?**





**ACSE**  
**SAFETY SYMPOSIUM**

EMBRY-RIDDLE | DAYTONA BEACH, FL